

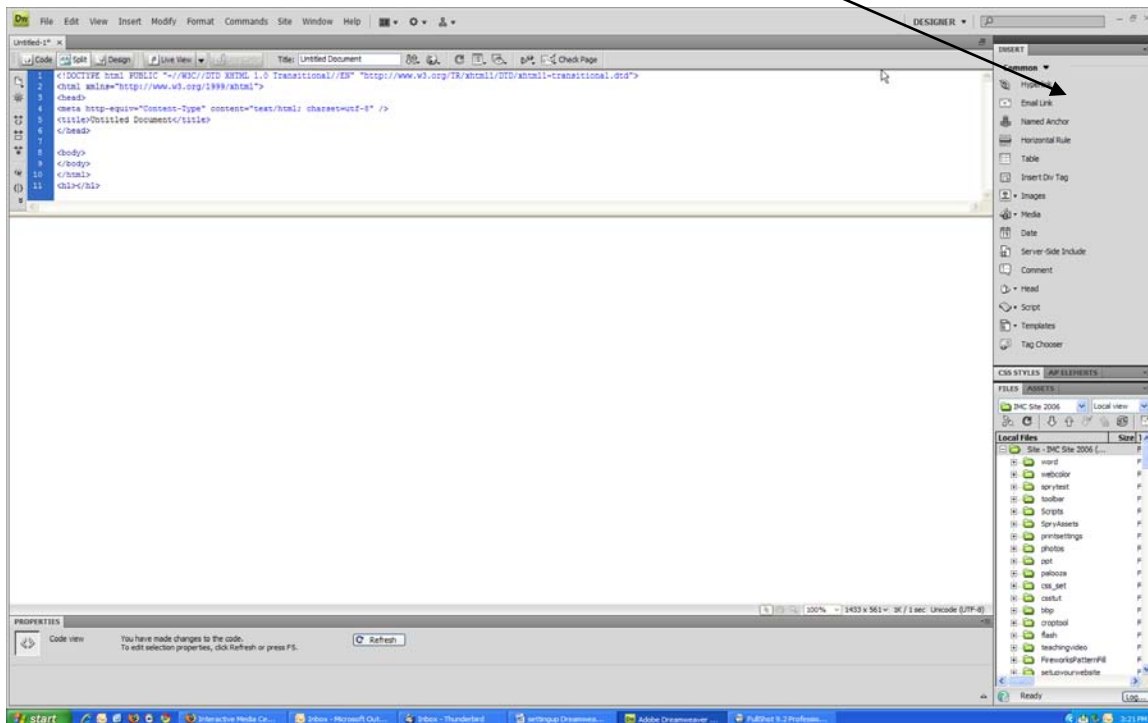
## Setting Up Dreamweaver CS4 on Windows Computers

Many users will find that the Dreamweaver CS4 user interface is a fairly radical departure from previous versions. It can be customized by the user to match each person's own work environment preferences. In this document we will explore the options so that you can set up Dreamweaver to work best for you. It is not possible to discuss every option in a short document such as this one. The highlights will be covered and we will encourage you to explore the rest.

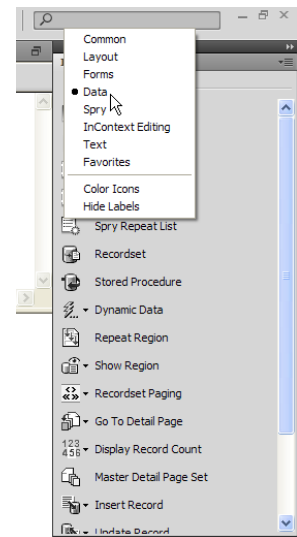
The new Dreamweaver default layout is illustrated below.

Note that the insert bar is now a panel on the right side of the screen. Other panels, including the Properties Inspector, remain their traditional places.

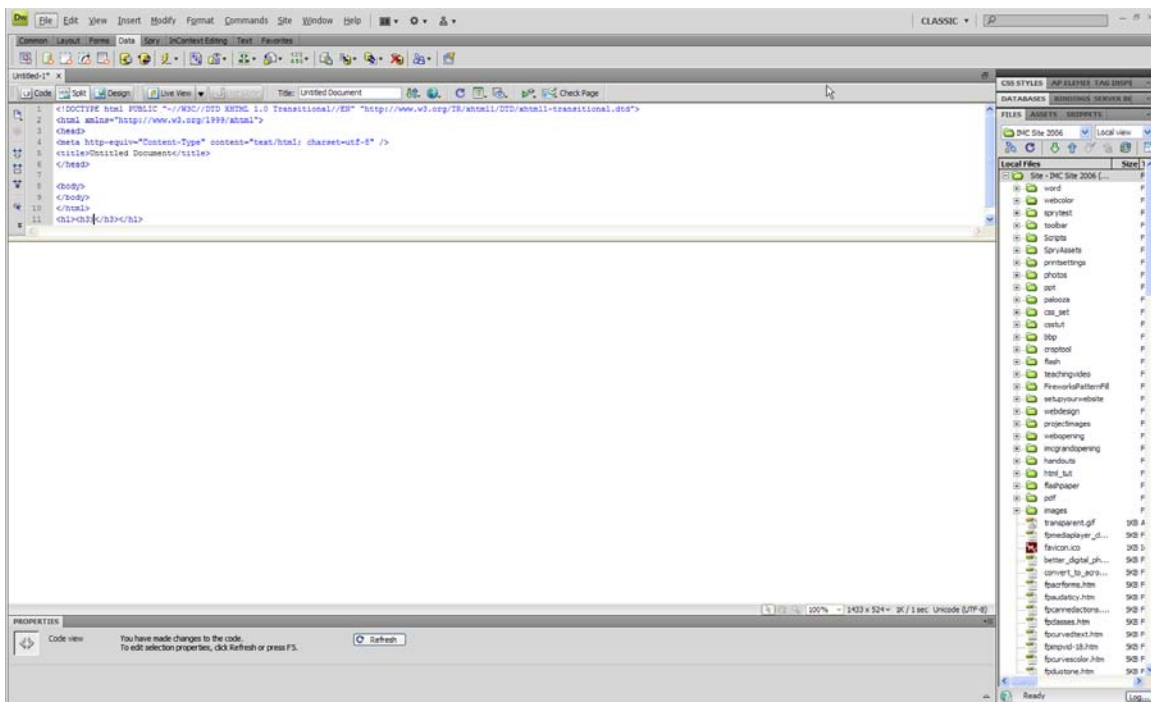
Insert panel



The Insert panel can be changed by clicking the options button at the right hand end of the Menu bar at the top of the screen. Select from the list which insert options you wish to display. The illustration on the right shows the panel with the Data option selected. The Common panel is used most often.

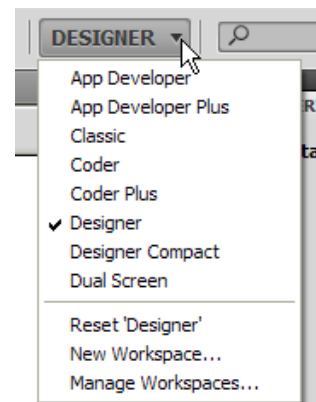


Dreamweaver CS4 can be set to display a “classic” interface that strongly resembles versions that include Dreamweaver MX and CS3. The image below illustrates this setting. Note that the Insert bar is now at the top of the screen and there is no Insert panel on the right



The label of this button depends on which layout is selected. In the illustration on the right, the Designer layout is chosen.

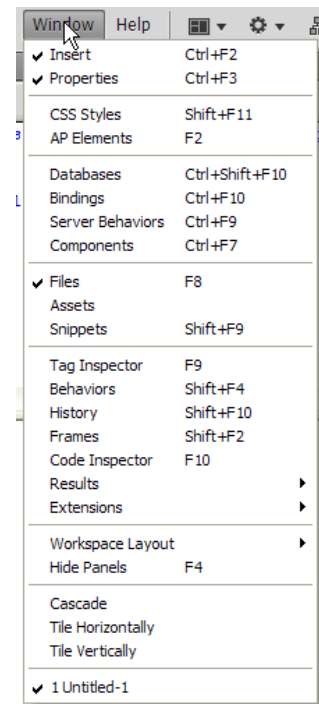
The Classic mode is popular with users who are familiar with the earlier versions of Dreamweaver. However, you should select the layout mode that you prefer and which best suits your working style. There is even a dual screen option that will be useful if you use two monitors.



The Window item on the Menu bar provides options that allow you to select which panels are open. The image on the right illustrates the choices. Dreamweaver traditionalists often prefer to have the Insert panel (or bar) and the Properties inspector open all the time. You may also wish to have the Files panel open so you can send files to the server quickly.

Other panel options include the History panel, Behaviors panel, and CSS Styles panel. Advances users will find the AP Elements, Bindings, and other panels to be helpful.

Depending on the workspace you have selected, these panels will often open in a column on the far right side of your screen. The panels can be undocked and floated around the workspace if desired. Users of the very early versions of Dreamweaver may recall that it featured floating panels by default. As the program became more complicated the panels took up more and more important screen real estate. Undocking the panels may be useful in some instances, but caution must be exercised so that your work space does not become cluttered thereby causing your work flow to slow.



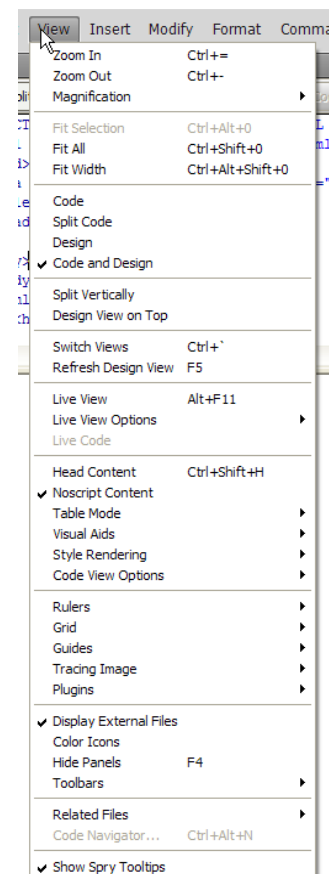
The View menu item on the Menu bar gives you a wide range of options for controlling the appearance of your work space. Several of the options can be used to increase the usefulness of the general interface.

Included are zoom in and out features and a magnification option. You can also select how to split the screen if you show both the Code and Design panels at the same time.

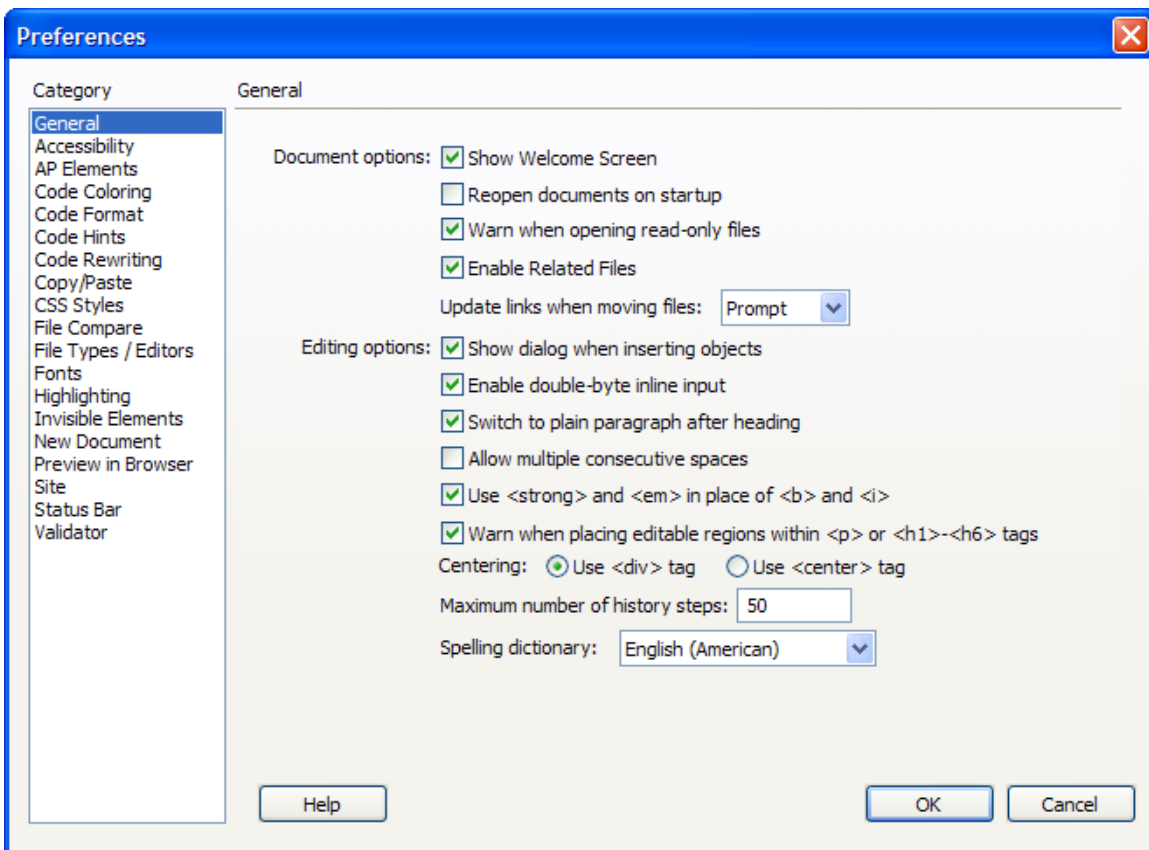
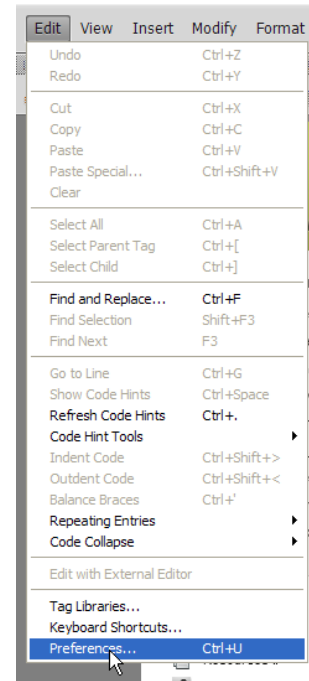
Live View allows you to show a page as if it were being displayed with a browser.

It is worthwhile taking some extra time to explore the many choices. One set of handy options that most users neglect to select is the ability to add rulers and guides to the works space. Rulers and guides are helpful when the user is trying to align objects on a page.

Explore the many options available on the View menu item.



The Preferences panel is illustrated below. To gain access to this panel click Edit on the Menu bar and then select Preferences on the drop down menu.



The Preferences panel is where you specify how Dreamweaver will act as you use it to build your Web pages. While most of the other options we have discussed so far involve

the appearance of Dreamweaver, the Preferences allow you to decide how it will accomplish tasks such as code writing.

Select a menu item in the Category column on the left side of the panel. The General item is shown above. In the center of the panel you can select the various options for the preferences. Choose another category item and then select the appropriate options.

Explore each category to discover the degree to which you can customize Dreamweaver CS4.