

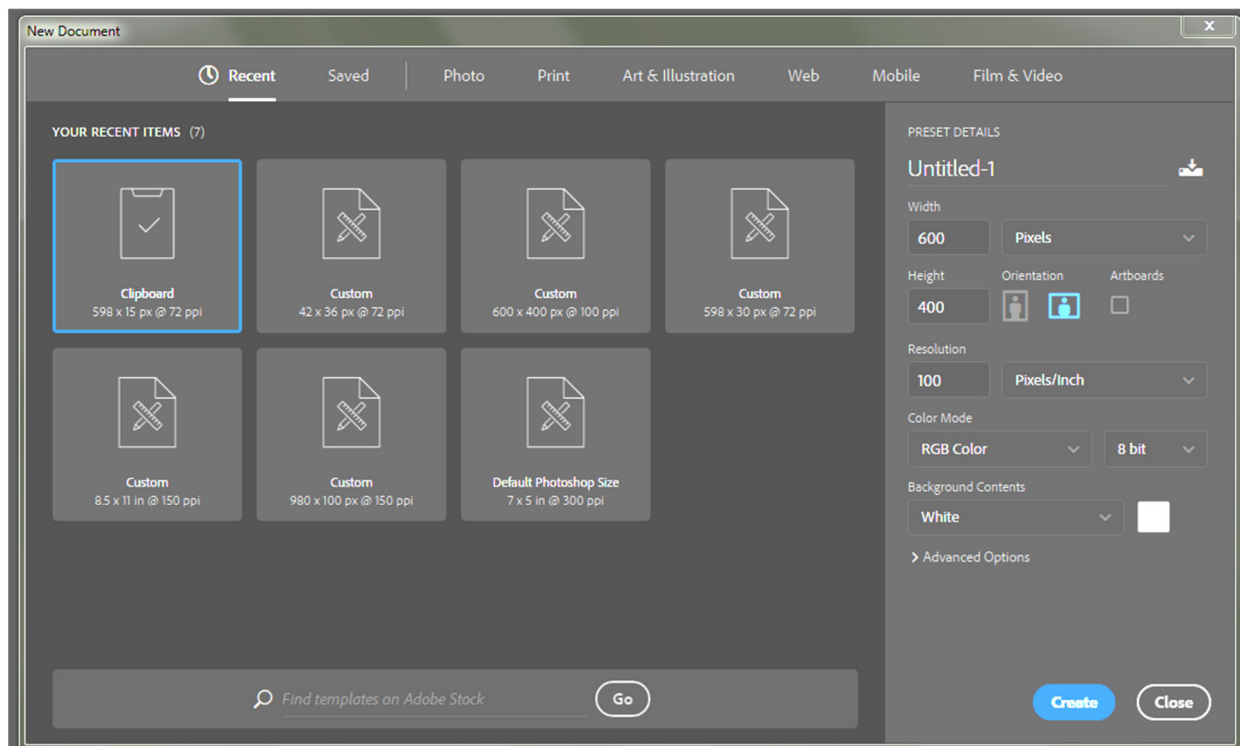
Create Text that Follows a Path with Photoshop

One important feature of Photoshop is the ability to create text that follows a path. Paths are special drawing objects. The path can be a straight line, convoluted line, or shape. This document explains how that is done.

Adding Text to a Line

This is very useful if you need text that must follow a decorative line, such as a wave. It works equally well for straight lines.

For this tutorial you will start a new image. Click File on the Menu bar, then Click New. The New image panel will open.



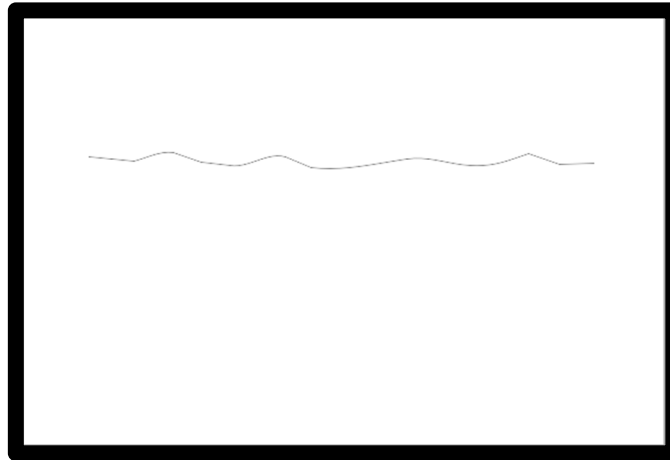
We suggest that your new file be at least 600 pixels wide, 400 pixels high, with a resolution of 100 pixels per inch. The color mode is RGB. The details are illustrated below.

Click Create

Select the Freeform Pen Tool on the Tool bar.



Click and drag to draw a path on your image. An example is shown below.



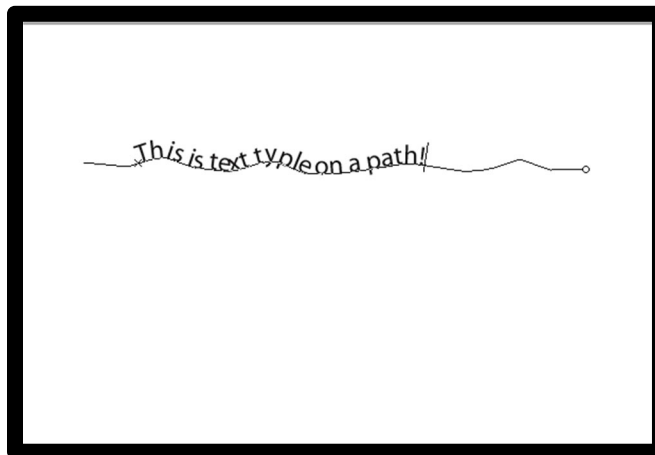
Select the Text tool on the Tool bar.



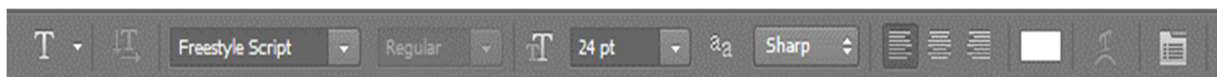
Place the Text tool on the path and click once. The mouse pointer will take on the Text I-beam shape and a flashing line will appear on the path along with small X. The small illustration below approximates what you will see.



Type your text. As you do so it will follow the path.



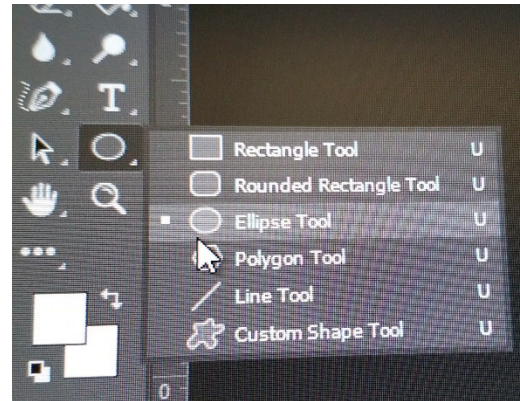
You may customize the text as needed. All of the usual options are available on the Tool Status bar which is illustrated below.



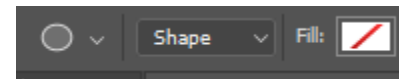
Adding Text to a Shape

Causing text to follow a shape is very similar, and just about as easy, as causing it to follow a regular line path. Start with a new image or delete the text and path from the image you used.

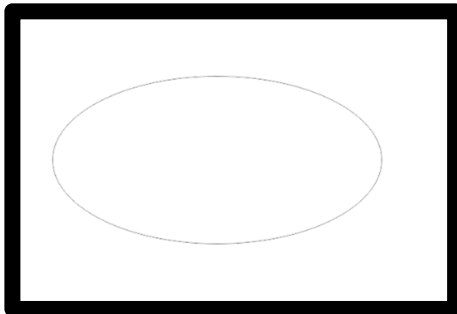
For this exercise we will use the Ellipse Tool. Select it from the Shape Tools options on the Tool bar. That menu series is illustrated on the right.



On the top line menu, confirm that the shape is set to no-fill



Click and draw a shape on your image.

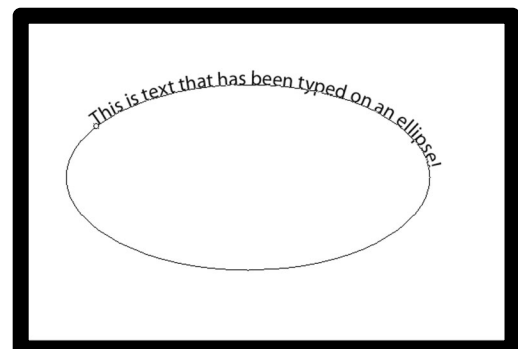


Select the Text tool on the Tool bar as you did previously.



Place the Text tool on the ellipse path and click one. As before, the mouse pointer will take on the I-beam shape.

Type your text. The text will follow the path starting at the point where you clicked and continuing around the ellipse as shown.



The text will appear on as a Text Layer in the normal manner. You can edit the text using the various standard text tools found on the Tool Status bar.